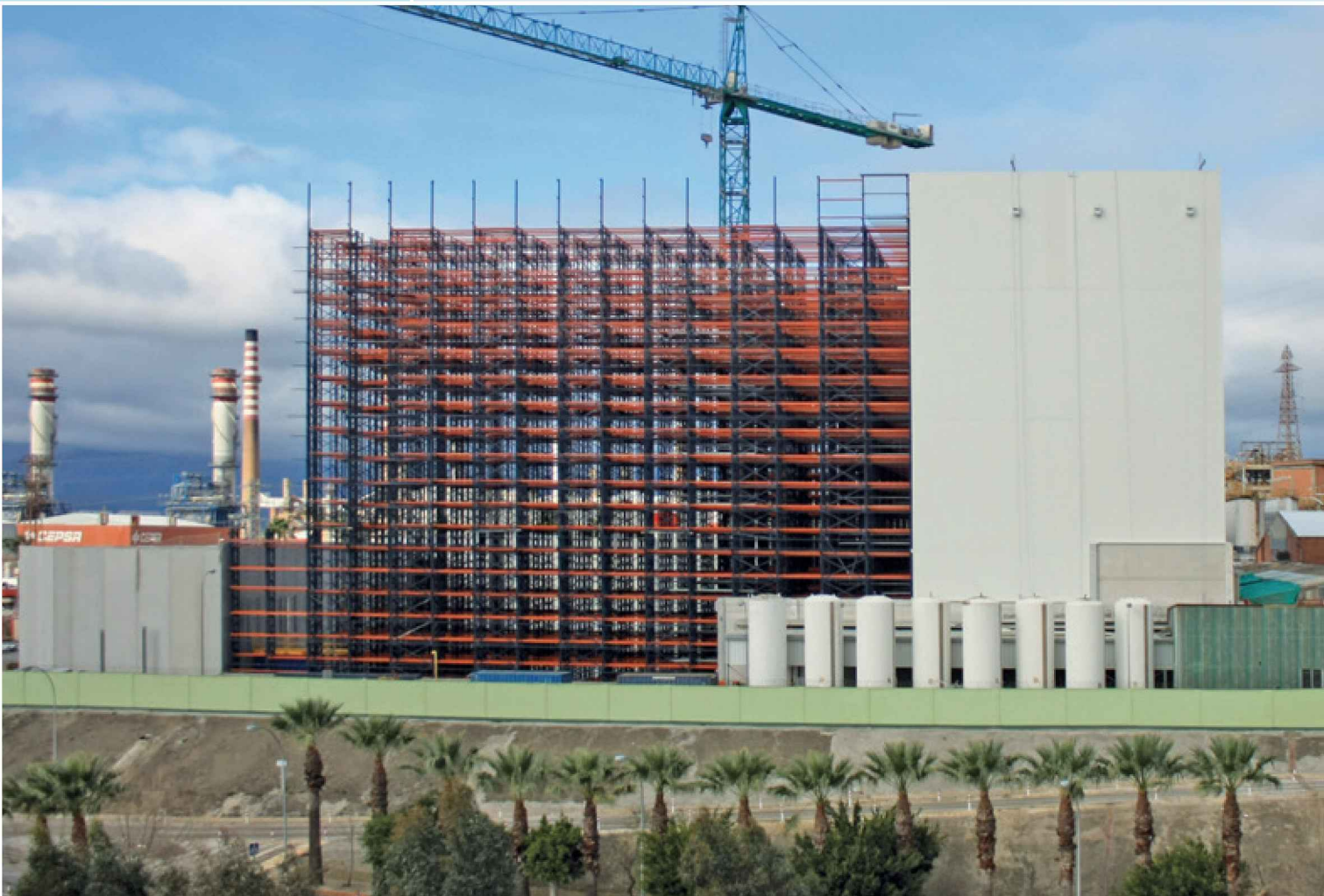


## Clad-rack warehouses

- ✓ Great works of engineering in which the racking forms the structure of the building.
- ✓ Enables maximum use of available surface area without wasting space.
- ✓ Allows a wide range of goods to be stored: pallets, containers, bulky packages and very heavy loads.



The clad-rack warehouse is the ideal solution for stacking goods high, as its design ensures the racking structure forms a compact unit along with the roofing and the clad walls of the warehouse, removing the need for building work.

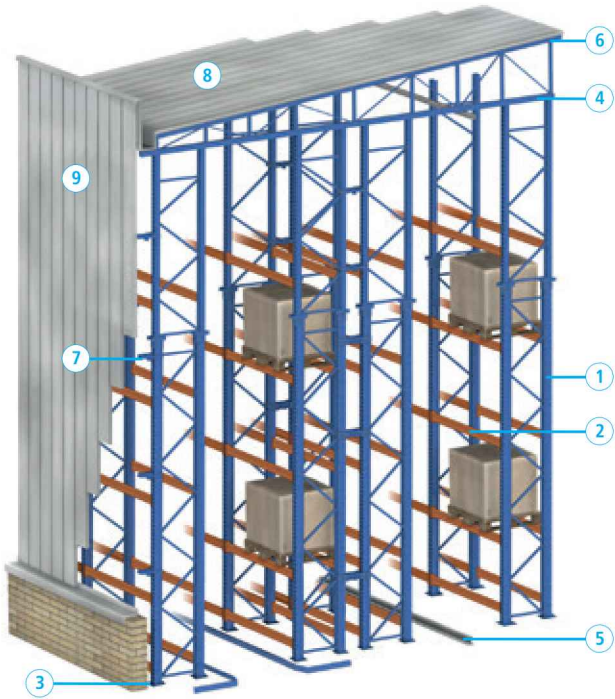
In these works of engineering the racking supports not only the entire structure and stored goods, but also the movements of the handling devices and external factors including wind, heavy snowfall, seismic activity, etc.

Furthermore, the only limitation to the height of these buildings is either due to local regulations or the handling devices to be used.

These warehouses allow for differing degrees of automation to guarantee optimal performance.







1. Frame
2. Beam
3. Footplates and anchor bolts
4. Roof trusses
5. Guide rails
6. Roof joist
7. Wall joist
8. Roof
9. Cladded walls

